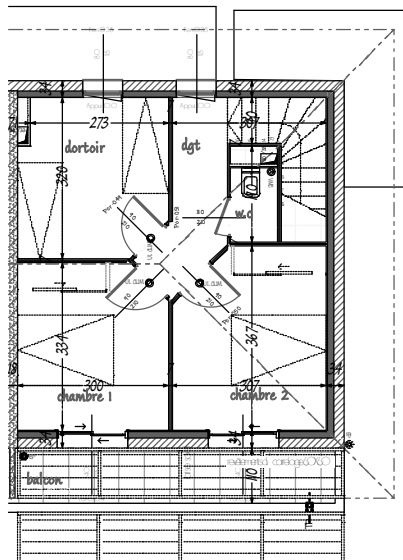
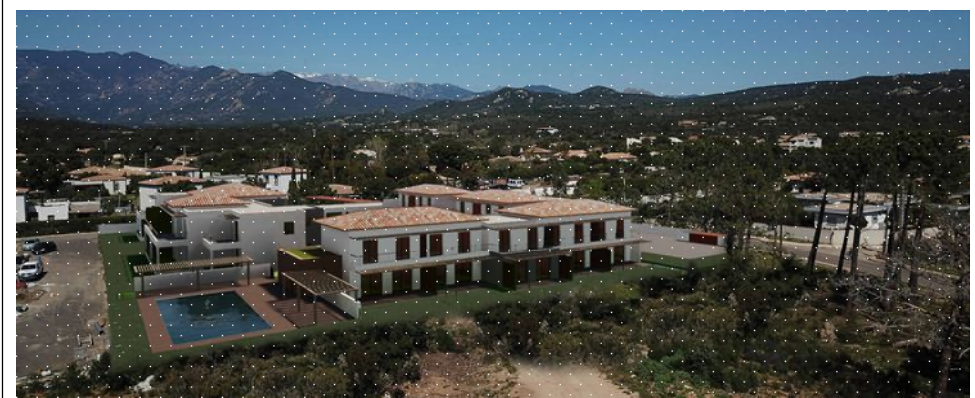
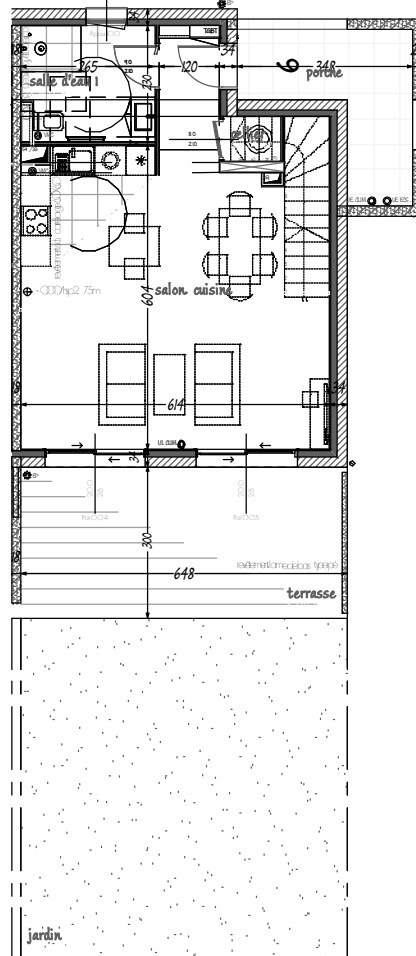


R+1



RDC



BATIMENT C	06
DUPLEX	TYPE 4
salon, cuisine	35,86
cellier	1,09
dgt	4,37
w.c	1,39
salle d'eau 1	6,17
chambre 1	9,73
chambre 2	10,58
dortoir	9,08
TOTAL HABITABLE	78,27
TERRASSE	20,24
JARDIN	43,91
PORCHE	7,62
BALCON	7,49

